



**HARDWOOD FINISHING PLANT**



# PREMIERE FINISHING & COATING

REIDSVILLE, **NORTH CAROLINA**

## **AN APPRECIATION OF QUALITY**

Premiere Finishing and Coating is the largest contract hardwood finishing plant in the country. They have serviced the nation since 2001, specializing in manufacturing finished hardwood flooring. The process of finishing wood requires experience, which Premiere has mastered in the past 16 years. Premiere's customers value the quality craftsmanship of their turnkey projects. Such quality begins with careful attention to detail in their standard and custom staining options.

## **THE MOST EFFICIENT SOLUTION**

With a 250,000 square foot facility, they have extended in providing additional services. Jeff Beach, president of Premiere Finishing & Coating wanted to make the most of his available resources to better serve his customers. Operating with 400-watt metal halides, they were hardly able to do so. Realizing that much of his resources were being depleted through the cost of his lighting, he began looking into the benefits of upgrading to LED. However, with lighting companies providing dismal ROI projections of ten years or more, upgrading to LED lighting didn't seem worth the cost.

After bringing in our Big Shine Energy Consultant, Mr. Beach finally started seeing numbers he could work with. Our consultant was able to provide a lighting solution with a 1.9-year ROI. By replacing their current lighting with our Oriya linear high bay, Premiere Finishing & Coating would see an increase in foot-candles and color accuracy. Big Shine Energy lighting technology is designed with high CRI levels of 80 or more. Our 150w Oriya would help in the accuracy of the color of stains they could serve their customers with.

## **MAKING A DIFFERENCE**

Jeff Beach can now take pride not only in the precision of his work, but in the difference he is making in our movement toward Approaching Zero CO<sub>2</sub>. Premiere Coating & Finishing can now look forward to saving 26,907 kWh each year as well as \$5,422 off their annual electric costs. See how working with Big Shine Energy can help you serve your customers.



The metal halides mounted above machinery in Premiere Finishing and Coating's plant were dim, increasing the danger of eye-strain and error due to inaccurate color rendering.

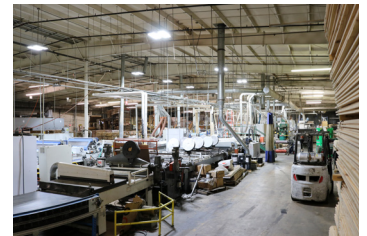
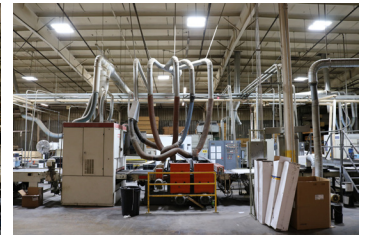


Premiere Finishing and Coating's machines are now sharply illuminated by Big Shine's Oriya linear high bays, allowing employees to accurately see the color of the wood stains to better service their customers.

## THE LIGHTS



Oriya  
150W



## THE NUMBERS

### ANNUAL SAVINGS



**\$5,421**

SAVED IN  
ENERGY COSTS



**26,907**

KWH SAVED

### ENVIRONMENTAL IMPACT



**20.8**

TONS OF  
CO<sub>2</sub> EMISSIONS  
REMOVED



**4**

CARS REMOVED  
FROM THE  
ROAD



**17.9**

ACRES OF  
U.S. FORESTS  
PLANTED